

# POLOKWANE GATEWAY AIRPORT (FAPP)

FAPP | Public

Coordinates	S23°50'43" E29°27'31"
Elevation	4,076 ft AMSL
Frequency	<b>124.3 MHz</b>
Access	Public
Fuel	JET A-1, AVGAS 100LL (?)
Night Ops	Yes
Tower Phone	+27 15 288 0343

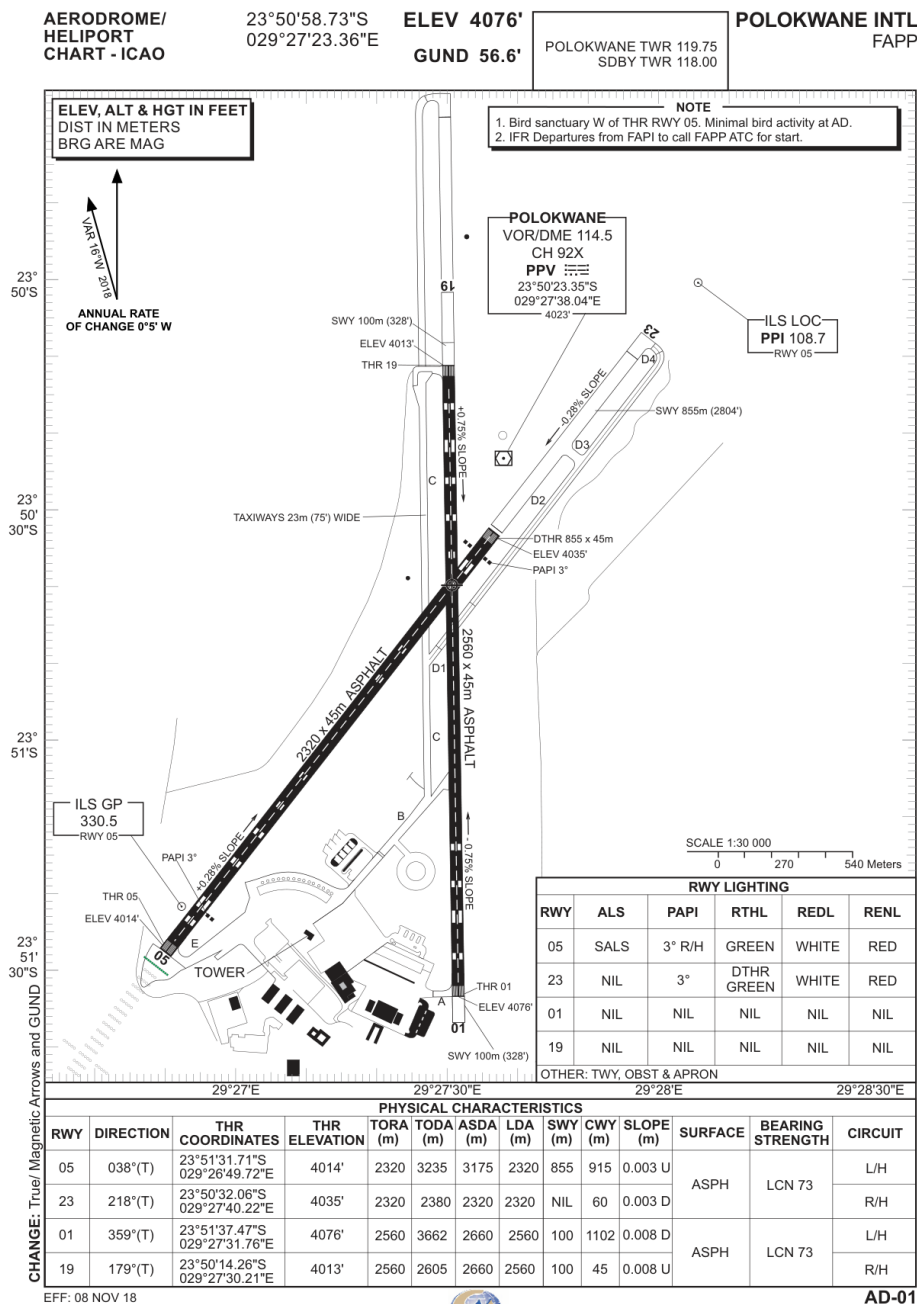
## Runways

RWY	Length	Width	Surface	Strength
01/19	2,560 m	45 m	Asphalt	[L] Left (?)
05/23	2,320 m	45 m	Asphalt	[L] Left (?)

## [!] [!] Controlled airspace — Class C CTR

- Serves Polokwane (formerly Pietersburg), Limpopo capital
- New gateway airport replaced old Pietersburg airport (FAP)
- Scheduled services by Airlink and others
- ~900 nm northeast of Cape Town

## Aerodrome Diagram



Verify currency against official AIP

Data source: SACAA AIP (collected 2026-03-19)

---

SUPPLEMENTARY REFERENCE ONLY — Does NOT replace SACAA AIP, NOTAMS, or official aerodrome charts. Verify all data before flight. Use entirely at your own risk. | [wagyu.wings](https://wagyu.wings)