

EAST LONDON / KING PHALO AIRPORT (FAEL)

FAEL | Public — Regional airport

Coordinates	S33°02'06" E27°49'17"
Elevation	435 ft AMSL
Frequency	118.3 MHz
Access	Public — Regional airport
Fuel	JET A-1, AVGAS 100LL
Night Ops	Yes
Tower Phone	+27 43 736 6161

Frequencies

EL Tower	118.3 MHz
EL Approach	120.1 MHz
EL Apron	122.65 MHz
EL ATIS	126.65 MHz

Runways

RWY	Length	Width	Surface	Strength	Circuit
11/29	1,939 m	46 m	Asphalt	PCN 40	Left
06/24	1,585 m	46 m	Asphalt	(?)	Left
Service	Frequency				
EL Tower	118.3 MHz				
EL Approach	120.1 MHz				
EL Apron	122.65 MHz				
EL ATIS	126.65 MHz				

[!] **[!]** Controlled airspace — Class C CTR from surface to 5500 ft

- Renamed from Ben Schoeman Airport to King Phalo Airport
- Regular scheduled airline services
- ~530 nm east of Cape Town
- VFR routes available — contact Approach for clearance
- Sea breeze effects can cause rapid weather changes

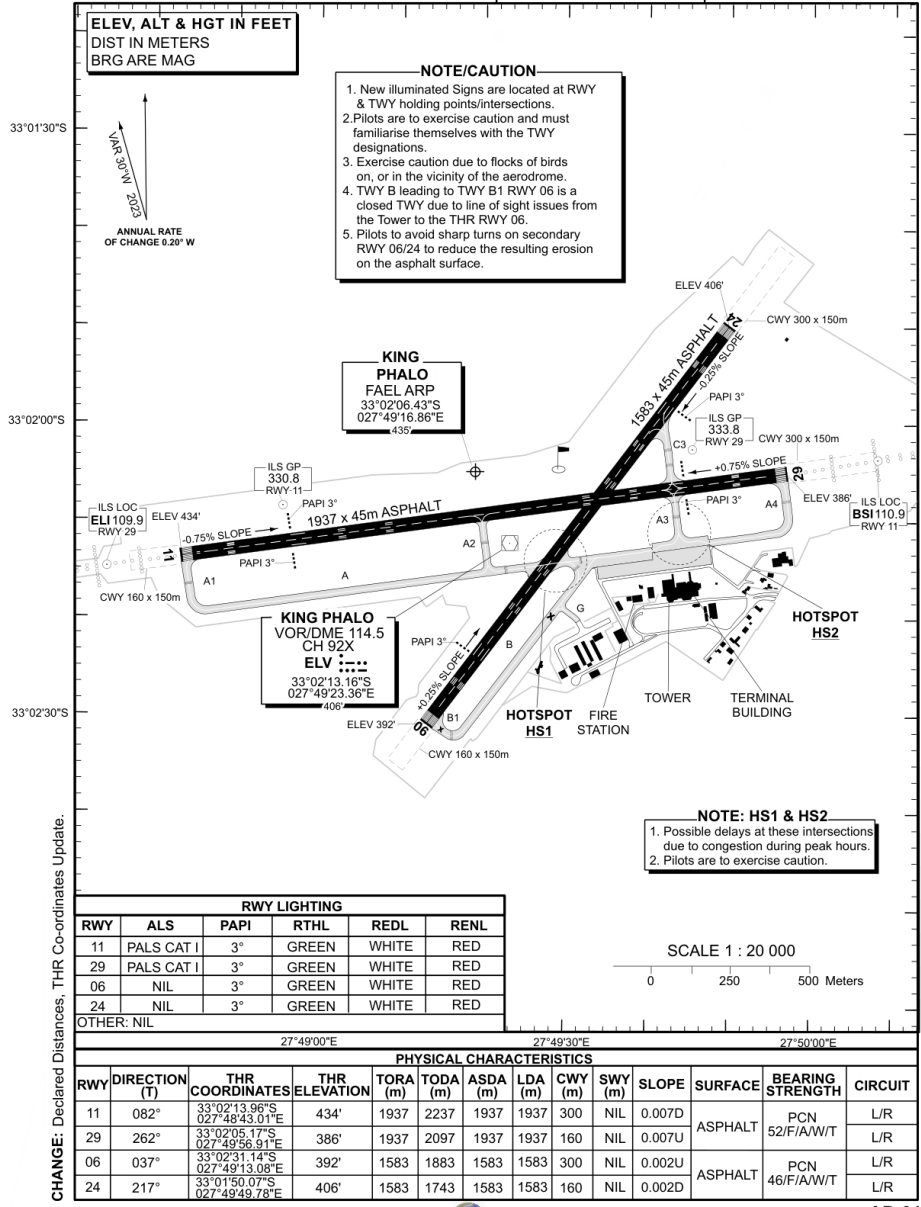
Contact: East London ATC, Tel: +27 43 706 0306

Aerodrome Diagram

AERODROME/ 33°02'06.43"S **ELEV 435'**
HELIPORT 027°49'16.86"E **GUND 97.0'**
CHART

EAST LONDON ATIS: 126.65
 APN: 122.65
 TWR: 118.30
 APP: 120.10

KING PHALO
 FAEL



RWY LIGHTING					
RWY	ALS	PAPI	RTHL	REDL	RENL
11	PALS CAT I	3°	GREEN	WHITE	RED
29	PALS CAT I	3°	GREEN	WHITE	RED
06	NIL	3°	GREEN	WHITE	RED
24	NIL	3°	GREEN	WHITE	RED

PHYSICAL CHARACTERISTICS													
RWY	DIRECTION (T)	THR COORDINATES	THR ELEVATION	TORA (m)	TODA (m)	ASDA (m)	LDA (m)	CWY (m)	SWY (m)	SLOPE	SURFACE	BEARING STRENGTH	CIRCUIT
11	082°	33°02'13.96"S 027°48'43.01"E	434'	1937	2237	1937	1937	300	NIL	0.007D	ASPHALT	PCN 52/F/A/W/T	L/R
29	262°	33°02'05.17"S 027°49'56.91"E	386'	1937	2097	1937	1937	160	NIL	0.007U	ASPHALT	PCN 52/F/A/W/T	L/R
06	037°	33°02'31.14"S 027°49'13.08"E	392'	1583	1883	1583	1583	300	NIL	0.002U	ASPHALT	PCN 46/F/A/W/T	L/R
24	217°	33°01'50.07"S 027°49'49.78"E	406'	1583	1743	1583	1583	160	NIL	0.002D	ASPHALT	PCN 46/F/A/W/T	L/R

EFF: 18 APR 24 SOUTH AFRICAN CIVIL AVIATION AUTHORITY **AD-01** ACSP: ATNS

Verify currency against official AIP

Data source: SACAA AIP (collected 2026-03-19)

SUPPLEMENTARY REFERENCE ONLY — Does NOT replace SACAA AIP, NOTAMs, or official aerodrome charts. Verify all data before flight. Use entirely at your own risk. | waygu.wings