

GEORGE AIRPORT (FAGG)

FAGG | Public (ATC, landing fees)

Coordinates	S34°00'20" E22°22'44"
Elevation	648 ft AMSL
Access	Public (ATC, landing fees)
Fuel	AVGAS, Jet A1
Night Ops	Yes
Tower Phone	+27 44 803 7732

Frequencies

ATIS	126.225 MHz
Tower	118.9 MHz
Approach / Radar	128.2 MHz
Apron	122.65 MHz
SRA West	124.2 MHz
SRA East	124.8 MHz

Runways

RWY	Length	Width	Surface	Strength
11/29	2,000 m	45 m	Asphalt	N/A (controlled)
02/20	1,220 m	30 m	Composite	N/A (?)

- Full ATC services (ATNS) — the hub for Garden Route region
- Scheduled airline service (FlySafair, CemAir etc.)
- ILS CAT I/II, radar approach available
- Alternate for FAMO and FAPG
- Mag Var 025°W

Aerodrome Diagram

**AERODROME/
HELIPORT
CHART - ICAO**

34°00'24.13"S **ELEV 648'**
022°22'27.41"E **GUND 104.1'**

GEORGE ATIS 126.225
ALPHA OSCAR (APN) 122.65
TWR 118.90
APP 128.20

**GEORGE
FAGG**

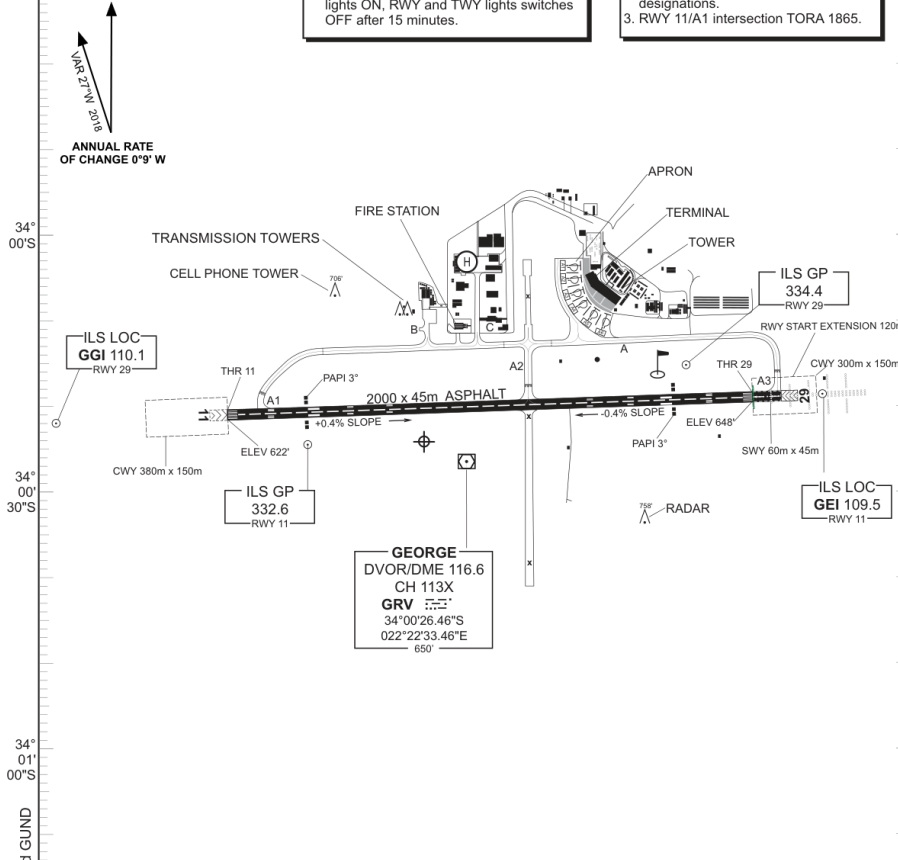
**ELEV, ALT & HGT IN FEET
DIST IN METERS
BRG ARE MAG**

NOTE

1. Contact Apron prior to TWR on start-up.
2. After Hours Remote RWY Lights:
5 clicks on FREQ 118.9 MHz switches
lights ON, RWY and TWY lights switches
OFF after 15 minutes.

CAUTION

1. Bird activity on aerodrome.
2. Pilots are to exercise caution and must
familiarise themselves with the TWY
designations.
3. RWY 11/A1 intersection TORA 1865.



RWY LIGHTING					
RWY	ALS	PAPI	RTHL	REDL	RENL
11	NIL	3°	GREEN	WHITE	RED
29	PALS CAT II	3°	GREEN	WHITE	RED

OTHER: OBST & TWY

RWY	DIRECTION	THR COORDINATES	THR ELEVATION	PHYSICAL CHARACTERISTICS						SURFACE	BEARING STRENGTH	CIRCUIT	
				TORA (m)	TODA (m)	ASDA (m)	LDA (m)	SWY	CWY				SLOPE
11	088°(T)	34°00'21.30"S 022°21'59.01"E	622'	2000	2300	2060	2000	60m	300m	0.004 U	ASPH	PCN 49/F/B/Y/U	R/H
29	268°(T)	34°00'18.83"S 022°23'16.90"E	648'	2120	2500	2120	2000	0m	380m	0.004 D		L/H	

EFF: 11 OCT 18



AD-01

Verify currency against official AIP

Data source: SACAA AIP (collected 2026-03-19)

SUPPLEMENTARY REFERENCE ONLY — Does NOT replace SACAA AIP, NOTAMS, or official aerodrome charts. Verify all data before flight. Use entirely at your own risk. | waygu.wings